

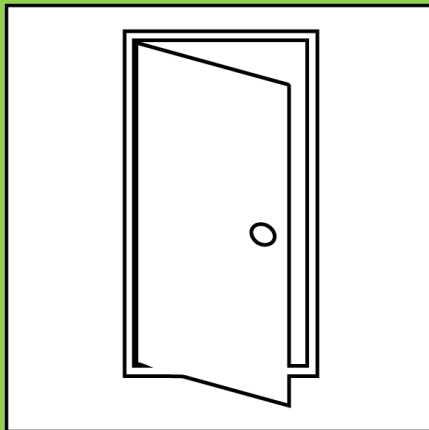
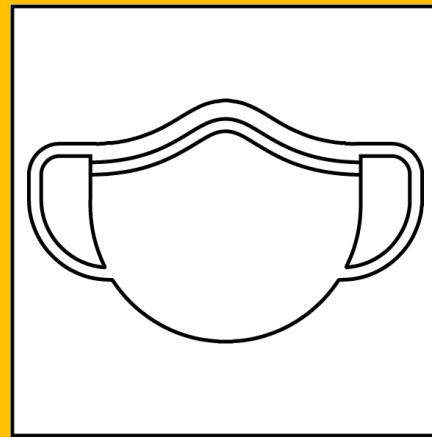
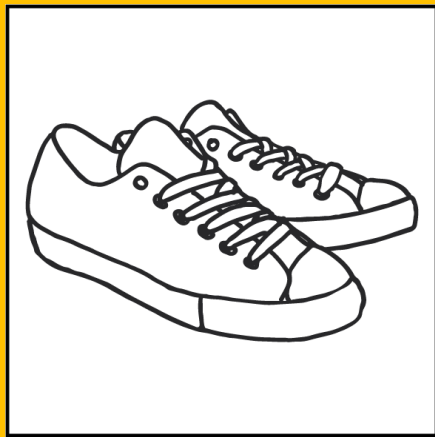
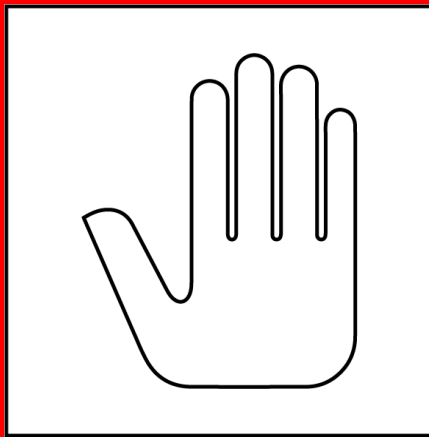


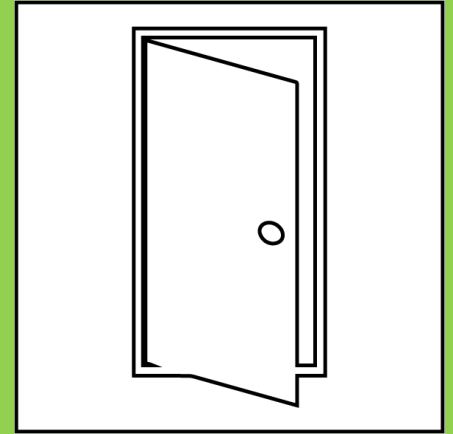
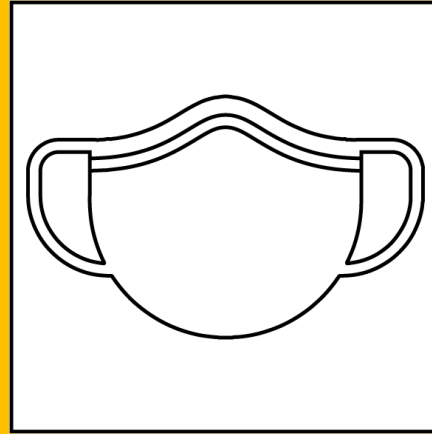
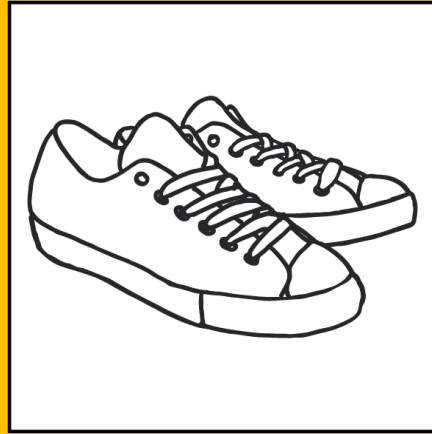
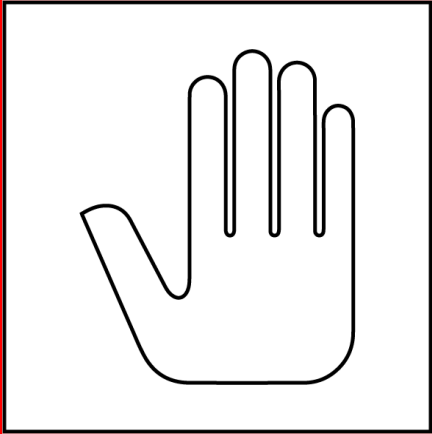
Covid-19 e Autismo:

come avvicinare il bambino
all'utilizzo dei dispositivi

SUPPORTI VISIVI









Per restare sempre aggiornato su tutte le nostre attività
Seguici sul sito www.tieniamente.it e sui nostri *Social*:
Associazione TAM – Tieni a Mente | **Tam Cooperativa Sociale Onlus**

